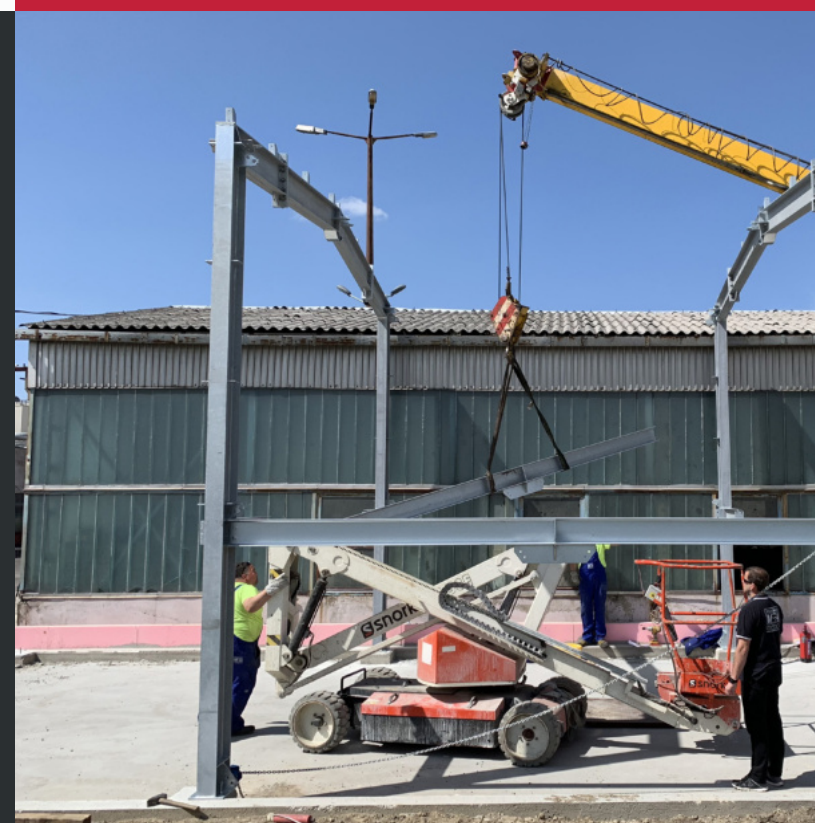




ALLOW ME TO
BRIEFLY INTRODUCE
OUR COMPANY
IN THE HOPE OF
FUTURE COOPERATION

In the Service of Industry!



MULTISTEEL HUNGARY LTD.

We are on the market
since 2010

100% Hungarian
owned company

With 40 employees
of our own and permanent
subcontracting partners

OUR REVENUE IS CONSTANTLY GROWING

1 billion in 2020
1.22 billion net in 2021
1.6 billion net in 2022

OUR OFFICE
AND OUR 1000 m2 pre-sales
facility is located in
Dunaújváros and
our head office is
in Budapest.



The 3 main activities of Multisteel Hungary LTD.:

- TECHNOLOGY PIPE INSTALLATION, PRESSURE VESSEL AND TANK MANUFACTURING
- STEEL STRUCTURE PRODUCTION, INSTALLATION
- COMPLETE CONSTRUCTION WORKS

We have everything necessary for the implementation of these activities:
appropriate authorisations, company qualifications, certifications, engineers, FMV, certified welders, locksmiths, isometric pipe fitters, qualified construction specialists, personal hoists, earthmoving machines, scaffolding, material handling equipment, tools.

ABOUT US, OUR MAIN ACTIVITIES



TECHNOLOGICAL PIPING, PRESSURE VESSEL AND TANK MANUFACTURING

PROCESS PIPING, PRESSURE VESSEL AND TANK MANUFACTURING



ONE OF THE MAIN ACTIVITIES
OF OUR COMPANY IS THE
TECHNOLOGICAL ASSEMBLY,
WHICH IN TERMS OF

- ACID RESISTANT
 - STAINLESS,
 - CARBON STEEL,
 - P91 HEAT-RESISTANT AND
 - PLASTICS (PE, PP, PVC, HDPE, ABS)
- PIPE SYSTEMS,
- WELDING,
 - PRESSURE TESTING,
 - DESIGN ON REQUEST AND
 - HANDOVER TO THE
AUTHORITIES.

We also offer the manufacture,
design, official delivery, transport
and installation of pressure vessels,
storage vessels and distribution bins.

We also manufacture industrial
equipment to individual
requirements,

our services include the
delivery, installation, instrumentation
and commissioning of the products,
as well as factory and building main-
tenance.

PROCESS PIPING, PRESSURE VESSEL
AND TANK MANUFACTURING



WITH GREAT EXPERIENCE
AND INFORMABLE REFERENCES
IN THE FOLLOWING AREAS:



PAPER STORAGE:

EXPLOITING A NEW COMPLETELY
SEALED AIR CONVEYOR SYSTEM
IN A NEW CASE, made of 1.4404
grade acid-resistant pipe.

REPLACEMENT OF VACUUM WELLS
FOR CAPACITY REINFORCEMENT.
With associated DN150-DN600 size.
EXTENSION OF WATER SUPPLY LINE
with DN150 size 1.4404 acid-proof
pipe of material quality.

CONSTRUCTION OF A PIPELINE
FOR A PAINT DOSING SYSTEM
DN15 - DN25 with acid resistant pipe
of material grade 1.4571.

PAPER PLASTING - PREPARATORY
ENGINEERING of acid-proof pipelines
up to DN15-DN600.

ACTIVE PARTICIPATION IN TMK
OPERATIONS PERFORMANCE OF
MACHINERY WORK on request
with a larger number of staff
(45 persons).



PROCESS PIPING, PRESSURE VESSEL
AND TANK MANUFACTURING



BATTERY FACTORIES

CONSTRUCTION OF A COMPLETE ACID-PROOF PROCESS PIPING NETWORK IN A BATTERY FACTORY IN SÓSKÚT approx. 6500m of mostly 1.4404 acid-resistant pipes, most of which were duplicated pipes. Partly including official handover.



WATER DISTRIBUTION NETWORKS

(Ivánca):

CONSTRUCTION OF MUNICIPAL, INDUSTRIAL AND FIREWATER NETWORKS in plastic, steel and mild steel pipes, in trenches or free-standing, DN80-DN500.

Manufacture and installation of individual manholes and shafts in plastic, steel and mild steel.

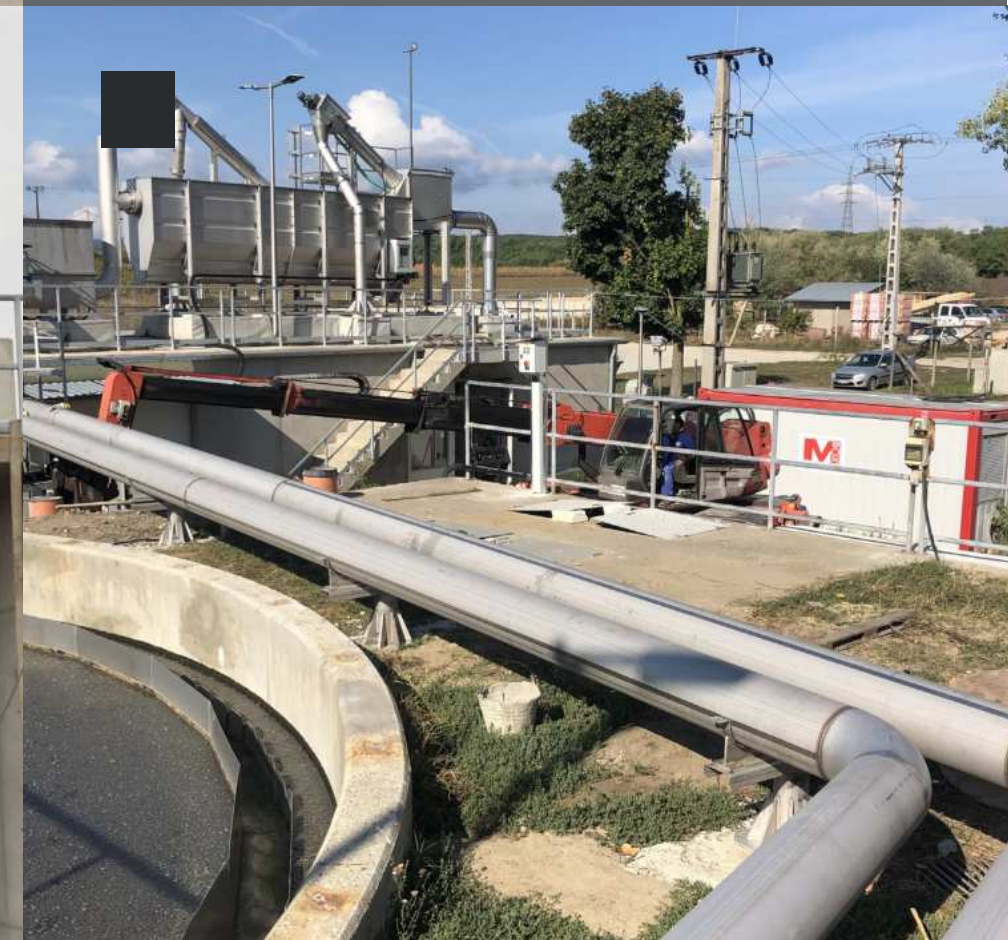
MUNICIPAL AND INDUSTRIAL WASTE WATER TREATMENT PLANTS

(Bicske, Újbarok, Csákvár, Detk, Ivánca, Dunaföldvár, Dunaújváros):

ENGINEERING WORKS OF PIPING PLATE TECHNOLOGY WITH INSTALLATION OF MATERIALS 1.4301, 1.4404 in material quality, DN50-600 in size.

INSTALLATION, ADJUSTMENT, COMMISSIONING OF PUMPS, AIR BLOWERS, CHEMICAL DOSING EQUIPMENT.

CONSTRUCTION OF PRESSURISED AND GRAVITY SEWERAGE SYSTEMS FOR RAW AND TREATED SEWAGE IN COURTYARDS, USING MECHANICAL EXCAVATION WORK.



PROCESS PIPING, PRESSURE VESSEL AND TANK MANUFACTURING



POWERPLANT:

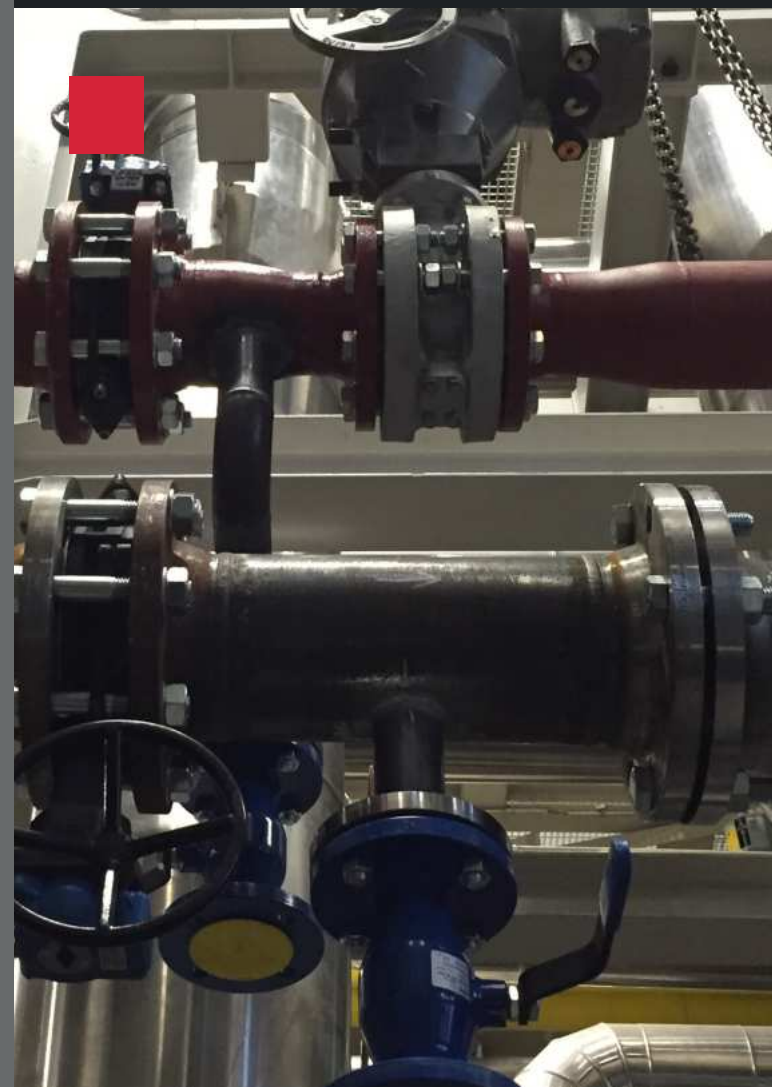
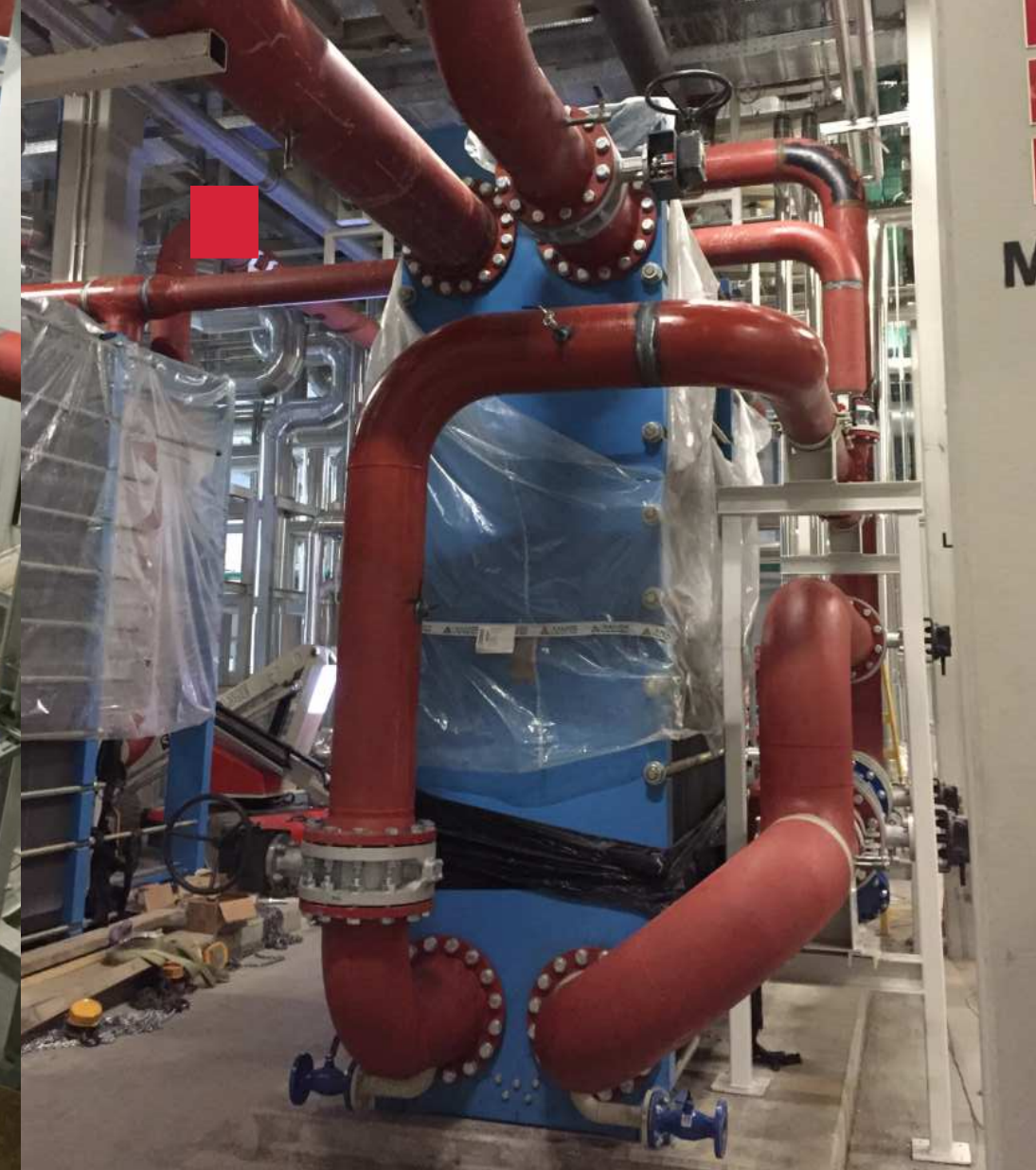
BOILER MEMBRANE WALL REPLACEMENT AND REPAIR WORKS.

COMPLETE REPLACEMENT OF BOILER BODY FEED SCREW.

NEWLY INSTALLED CATERPILLAR GAS ENGINE COMPREHENSIVE CHIPPING INCLUDING CHILLING POINTS (gas piping and cooling piping),

CONSTRUCTION AND INSTALLATION OF BIOGAS BUFFER TANK WITH OFFICIAL HANDOVER.

EXTENSION OF STEAM LINES in hot solid material with official delivery in sizes DN150 - DN600.



CONSTRUCTION OF LIGHT WATER CONCRETE PLUMBING SYSTEMS from acid-resistant pipe of material quality 1.4404, sizes DN100 - DN300

INSTALLATION OF NEW WATER SUPPLY SYSTEMS AND EXTENSION OF THE LINE LINES TO THE HIGHWATER SUPPLY SYSTEMS using acid-resistant pipe of material grade 1.4571, together with pressure PVC pipe and associated PE piping.

PROCESS PIPING, PRESSURE VESSEL AND TANK MANUFACTURING



PHARMACEUTICAL COMPANIES:

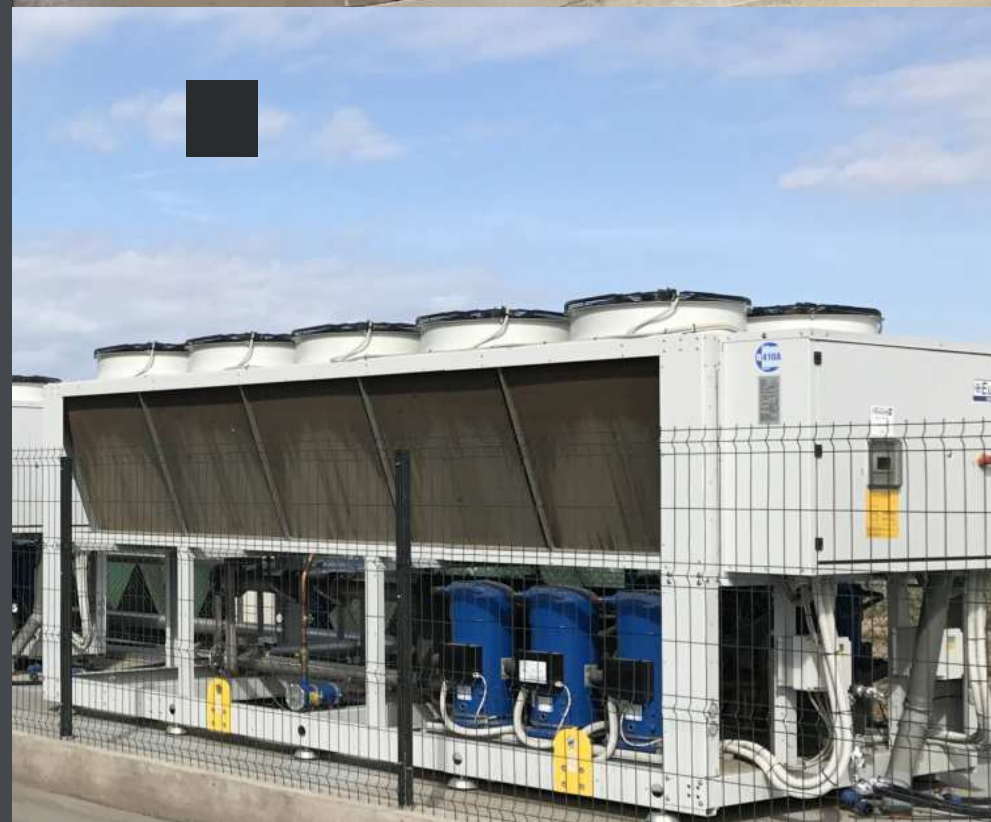
In Budapest pharmaceutical plant
REPLACEMENT OF AUTOCLAVES
IN ADDITION TO HIGH-PRODUCTION
TECHNOLOGICAL LINES,
in material quality 1.4404 and 1.4571.

SUBSTITUTIONAL REPLACEMENT
OF CONNECTION SYSTEMS,
IN CONNECTION WITH REQUIRED
PREPARATION WORK, in material
grades 1.4404, 1.4541 and carbon steel.

CONSTRUCTION OF INDUSTRIAL
GAS BOILER PIPING, WATER
TREATMENT CONNECTION AND
STEAM CONDENSATE PIPING TO
THE STEAM DISTRIBUTOR.

REPLACEMENT OF INSTALLED
FITTINGS WITH NECESSARY PIPING
MODIFICATIONS.

Dorog.
REPLACEMENT OF STEEL PIPELINES
in carbon steel in material quality 1.4404.



FOOD INDUSTRY, WINERY:

In Budapest brewery,
CIP LINES EXPLORATION,
CIP LINES EXPLORATION from acid-proof
pipe of material quality 1.4404.

In the winery in Kecel
EXPLORATION OF A COMPLETE
REFRIGERATION SYSTEM in 1.4301
from stainless steel tubes.

In Sopron brewery TECHNOLOGICAL
TUBING of 1.4301 and 1.4404 quality tubes.

TECHNOLOGICAL STEEL WORK IN
SALAMIERY in Alsómocsolád.



PROCESS PIPING, PRESSURE VESSEL
AND TANK MANUFACTURING



STEEL STRUCTURE PRODUCTION, ASSEMBLY

OUR COMPANY IS MAINLY FOCUSED ON THE CONSTRUCTION OF INDUSTRIAL, AGRICULTURAL AND COMMERCIAL FACILITIES AND TECHNOLOGICAL STEEL STRUCTURES.



WE MANUFACTURE

- PRIMARY AND SECONDARY STEEL STRUCTURES,
- RAILINGS,
- RAMPS,
- PODIUMS WITH STEEL OR PLASTIC
- WALKWAYS.

We are located in Dunaújváros.

Our production plant is a 1000 m2 crane hall (12-ton bridge crane) equipped with all the necessary machinery and equipment (band sawing machines, plasma cutting equipment, plate shears, presses, punching machines, chipping machines, etc.).

On request, we can also provide structural and production design of steel structures.

The steel structures we manufacture are provided with the surface treatment specified in the design. This can be painted with 1 or 2 component paints, hot-dip galvanised or even fire-retardant coatings.

If required, we can also carry out a test assembly of the steel structures to enable even faster assembly on site.



STEEL STRUCTURE PRODUCTION, ASSEMBLY



STEEL STRUCTURE PRODUCTION, ASSEMBLY



WELDING TASKS ARE
CARRIED OUT BY
SEMI- AUTOMATIC
GAS-SHIELDED
ARC WELDING,
COATED ELECTRODE
ARC WELDING
OR AWI WELDING
AS REQUIRED.



STEEL STRUCTURE PRODUCTION, ASSEMBLY



FOR ON-SITE INSTALLATION
WE HAVE A VARIETY OF SMALL
MACHINES
(CONCRETE DRILLS, CORE
DRILLS, MAGNETIC DRILLS,
WELDING EQUIPMENT, ETC.),
AS WELL AS ROLLING STANDS,
ARM AND SCISSOR LIFTS,
WINCHES AND CHAIN HOISTS.

STEEL STRUCTURE PRODUCTION,
ASSEMBLY



WITH GREAT EXPERIENCE
AND WE HAVE REFERENCES
IN THE FOLLOWING
FIELDS OF EXPERTISE:



- INDUSTRIAL AND PRODUCTION HALLS
- WAREHOUSES
- BUILDING FRAME STRUCTURES
- SUPPORTING STRUCTURES
- PODIUMS
- INDIVIDUAL STEEL STRUCTURES

STEEL STRUCTURE PRODUCTION, ASSEMBLY



STEEL STRUCTURE PRODUCTION,
ASSEMBLY



COMPLETE CONSTRUCTION WORKS

ONE OF THE MAIN ACTIVITIES OF OUR COMPANY IS THE CONSTRUCTION OF BUILDINGS, INCLUDING COMPLETE RENOVATION, CONVERSION OR MODERNISATION OF APARTMENTS, FAMILY HOUSES, PUBLIC OR INDUSTRIAL BUILDINGS.



WE CAN RENOVATE INDIVIDUAL ROOMS OR ENTIRE BUILDINGS, FROM DEMOLITION TO COMPLETE TURN-KEY DELIVERY, INCLUDING ELECTRICAL AND MECHANICAL WORK.

WE CAN ALSO CARRY OUT SUBCONTRACTING WORK SUCH AS

- COLD AND HOT TILING,
- RESIN TILING OR
- CONCRETE PAINTING,
- THERMAL AND WATER INSULATION,
- FACADE PAINTING,
- INTERIOR PAINTING,
- FENCE BUILDING,
- PLASTERBOARD WALLS AND SUSPENDED CEILINGS,
- FOUNDATION WORK AND
- REINFORCED CONCRETE STRUCTURES,
- MACHINE UNDERPINNING, AND
- EARTHWORKS FOR FOUNDATIONS OR TRACING WITH OUR OWN MACHINES.

We also have our own machines for drilling and cutting walls and slabs in reinforced concrete, brick or other materials in a wide range of sizes.



COMPLETE CONSTRUCTION WORKS

COMPLETE CONSTRUCTION WORKS



WITH GREAT EXPERIENCE
AND INFORMABLE
REFERENCES IN THE
FOLLOWING AREAS:



COLD, HOT, RESIN
OR CONCRETE TILING

Indoor or outdoor cold tiling
in all sizes, with variable
grouting, normal or mitred
edges.

Interior or exterior hot tiling
with cushion, glued or click
system.

Resin tiling or concrete painting
in all available colours, resistant
to chemicals or external agents.

Paving also in variable sizes,
with standard and kerb
and bedding.

COMPLETE CONSTRUCTION WORKS



COMPLETE CONSTRUCTION WORKS



THERMAL INSULATION, FAÇADE COLOURING AFTER DEMOLITION OF EXISTING FAÇADE LAYERS, WALL REPAIR, WITH CONTROL OF HANGERS.

Also for reinforced concrete, brick or adobe walls.

Fibre or Styrofoam insulation of all sizes, with edges, projections and borders.

Colouring in available colours, textures and washable or breathable finishes.

Scaffolding with our own tools.



WATERPROOFING

Waterproofing of interior or exterior surfaces, roofs with bitumen, PVC sheeting or waterproofing with spreadable waterproofing.

Preliminary surface or concrete repair.

Attic, roof edge or plinth design solutions.

COMPLETE CONSTRUCTION WORKS



**COATING, GUESTING,
PAINTING**

Plastering, smoothing and painting of masonry or concrete structures.

Coating of steel products in RAL colours, chemical resistant, fire retardant finish.



**PLASTERBOARD WALLS
AND FALSE CEILINGS**

Plasterboard partitions, boxing and suspended ceilings with various layers (1-2 layers, impregnated, fire retardant, etc.), thicknesses and jumps.



COMPLETE CONSTRUCTION WORKS

COMPLETE CONSTRUCTION WORKS



FENCE BUILDING

Prefabricated steel, reinforced concrete or masonry columns, plinths prefabricated or made on site.

Various fencing panels (reinforced concrete, steel mesh, panel, trapezoidal sheet, wpc) or complete systems.

Steel products in painted, powder coated or coated versions.



POURING, CONCRETING AND REINFORCED CONCRETE STRUCTURES

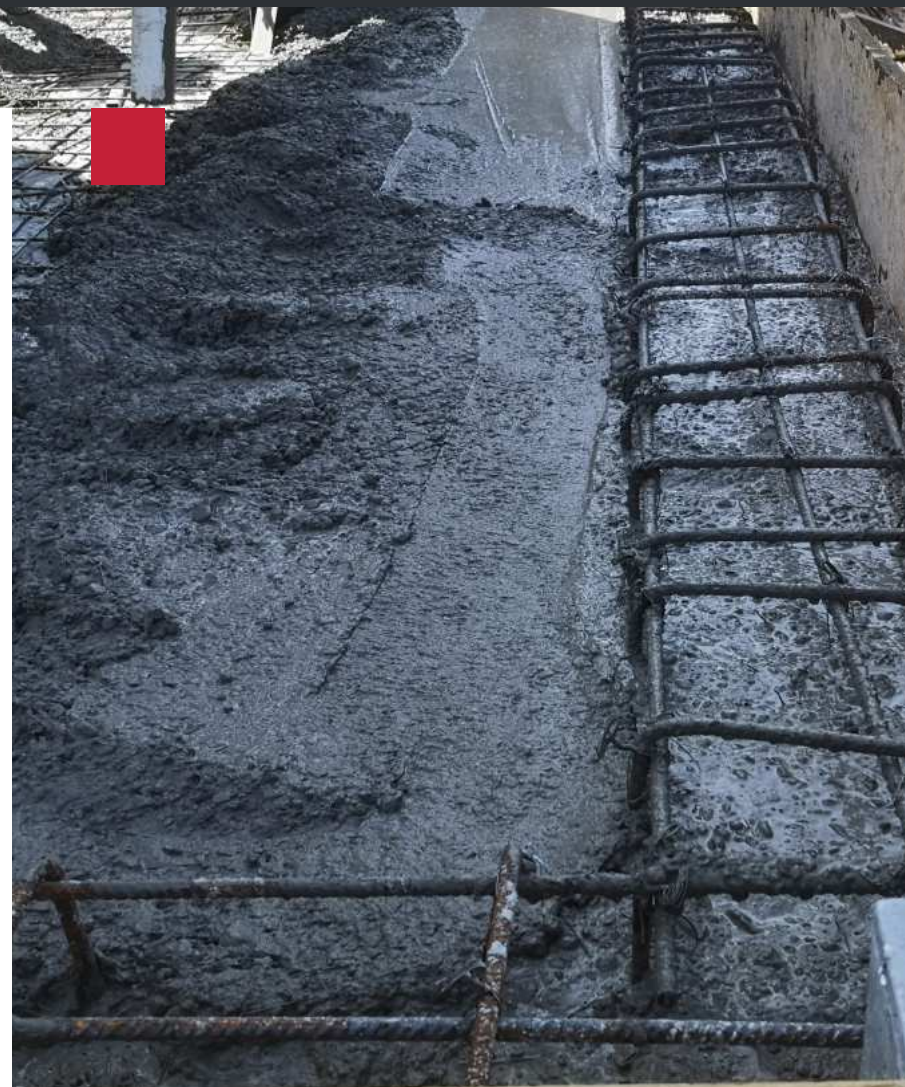
Subfloor preparation, levelling, construction of floating or normal floor structures, even on slopes.

Reinforcing steel installation in horizontal or vertical structures, up to several hundred square metres.

Wall, column or slab formwork using Peri or Doka element systems.

Screed mixing on site, screed with pump mixing. Concrete with on-site mixing or mixer and pump placement.

Machine underpouring, concrete surface repair with shrinkage free, gap filling concrete.



MASONRY (brick, ytong, formwork, other)

Masonry work up to the manufacturer's permissible height or up to 3 m.

Scaffolding with own tools.

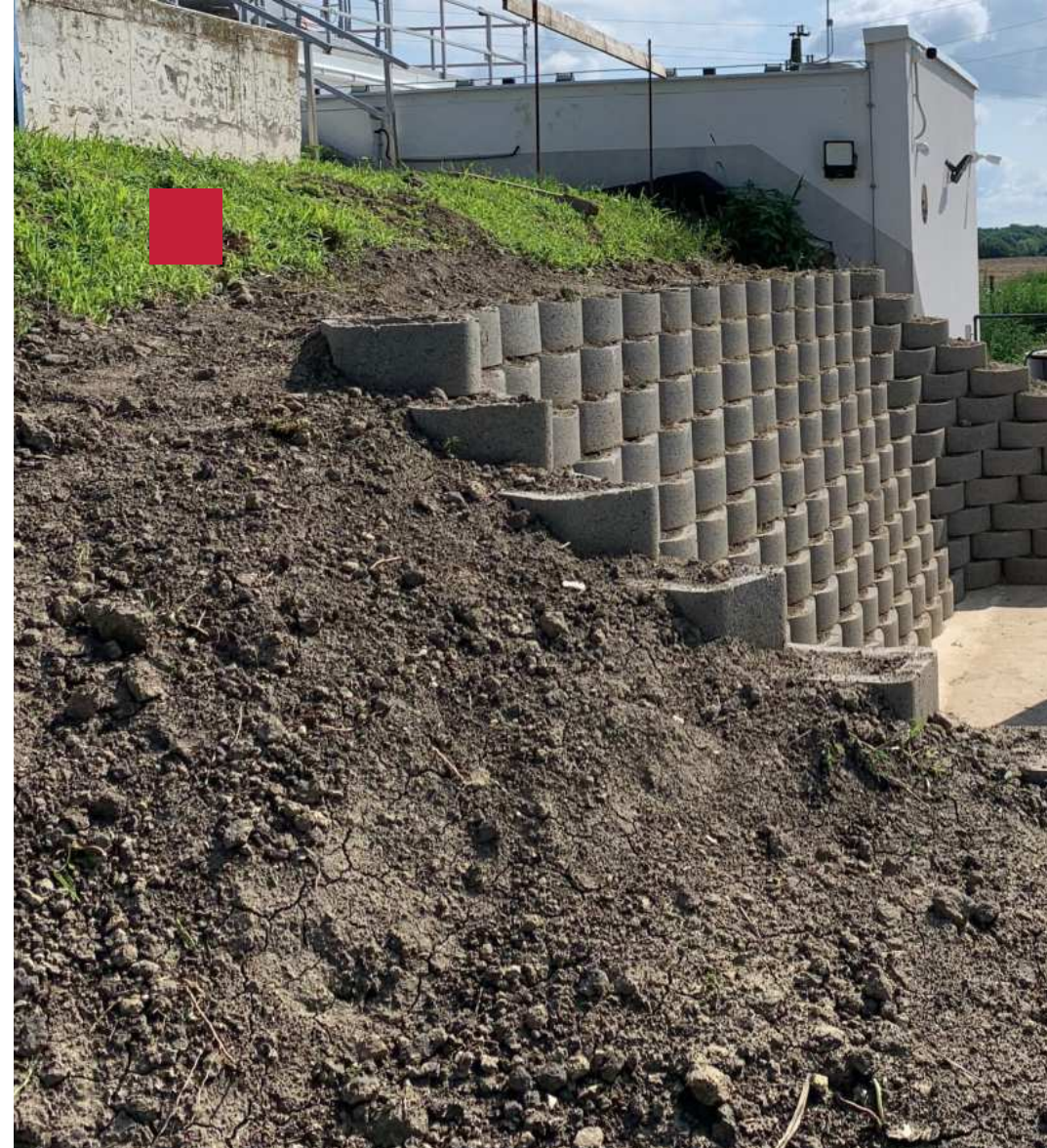
For on-site installation, we have a variety of small machines (concrete mixers, core drills, magnetic drills, welding equipment, etc.), including rolling scaffolds, lever and scissor lifts, and winches and chain hoists.

COMPLETE CONSTRUCTION WORKS



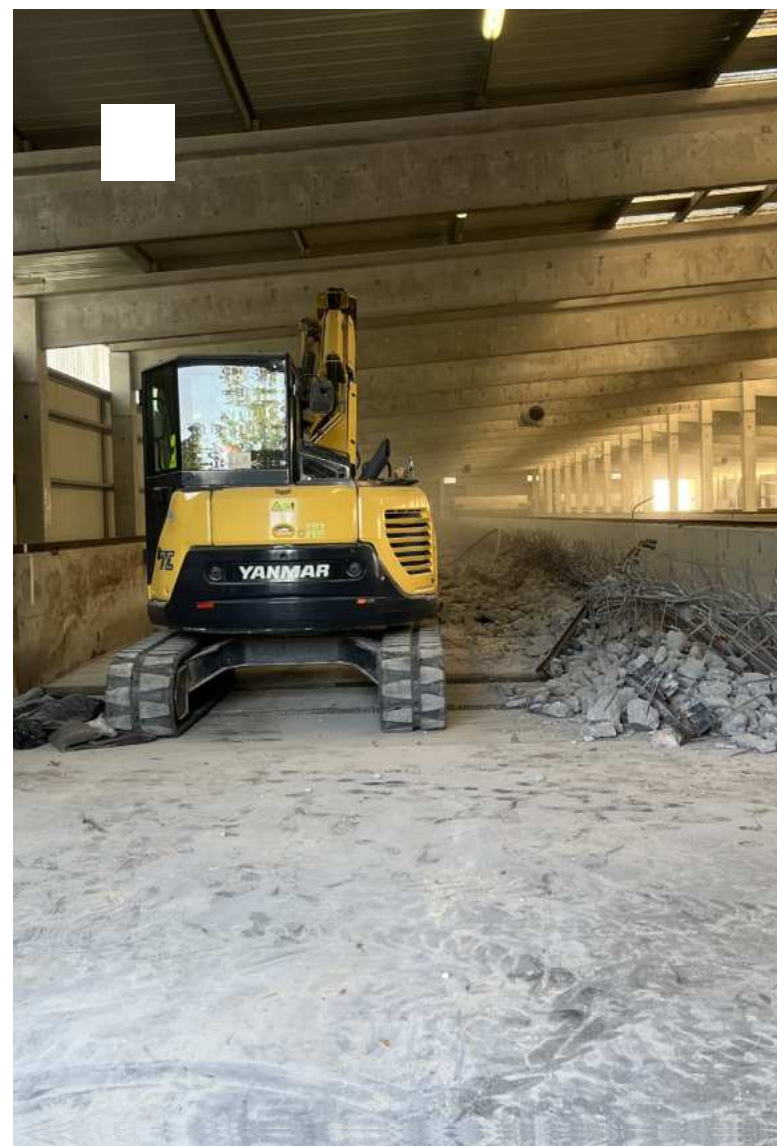
FIELD WORK

Excavation of trenches,
tracks or foundations with small and
large earthmoving machines,
land reclamation with earth removal.



REINFORCED CONCRETE, BRICK DRILLING AND CUTTING

Cutting of slabs and masonry in
depths/thicknesses between 1-50 cm
and drilling of diameters up to d14-d550
up to a maximum depth of 45 cm
(for small diameters +20 cm extension
can be used).
Milling of concrete surfaces up to 20 mm.



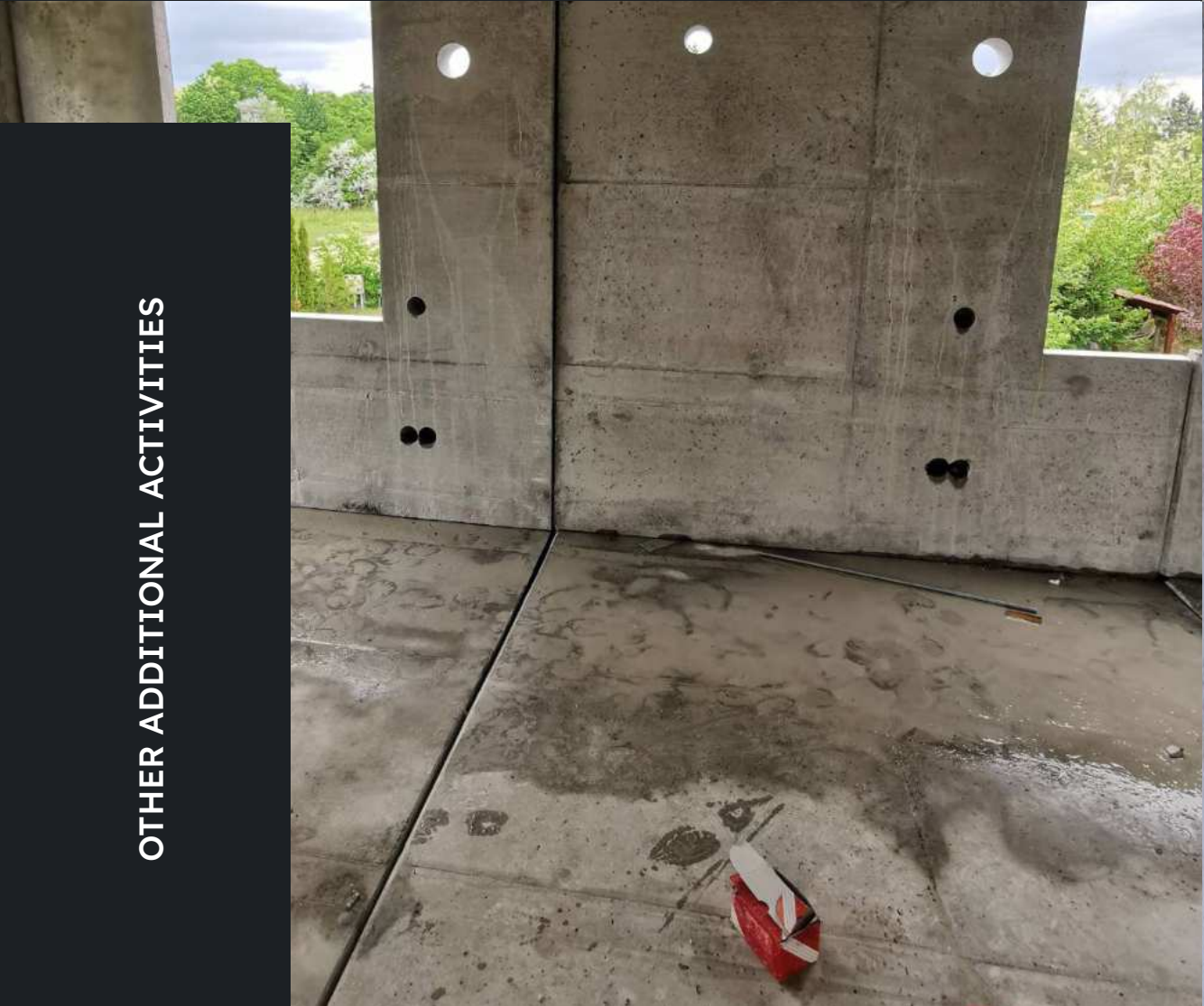
DEMOLIOTION

Demolition of internal cladding,
windows, roof coverings,
thermal and water insulation,
steel, concrete, wood or masonry
structures and waste removal with
certified delivery.

COMPLETE CONSTRUCTION WORKS



OTHER ADDITIONAL
ACTIVITIES NECESSARY
FOR OUR WORK:



- Cutting concrete,
- Concrete drilling,
- Concrete milling.
- Machine installation,
- Machine adjustment with our laser instruments.
- Factory and building maintenance.

OTHER ADDITIONAL ACTIVITIES

OTHER ADDITIONAL ACTIVITIES



OUR REFERENCE PARTNERS:



YOU CAN VISIT OUR WEBSITE AT THE LINK BELOW,
WHERE YOU CAN FIND MORE INFORMATION ABOUT OUR COMPANY
AND DOWNLOAD OUR COMPANY RATINGS.
<http://multisteelhungary.hu>

If you think that we might have a common point of interest in the future,
and if we could even contact each other in person, for which I would be
grateful, please contact me using one of our contact details.

Looking forward to a successful cooperation!

With many thanks:

István Törkő
Managing Director

OUR REFERENCES, CONTACT US

OUR REFERENCES, CONTACT US





HEADQUARTERS:
H-1027 Budapest,
Bem József u. 6. fszt.
+36/70-369-3281,
+36/70-250-0026,
+36/25-281-378

ADDRESS:
H-2401 Dunaújváros,
Papírgyári út 46.
1 Pf. 135.
office@multisteelhungary.hu
www.multisteelhungary.hu